

# Carpet Picture



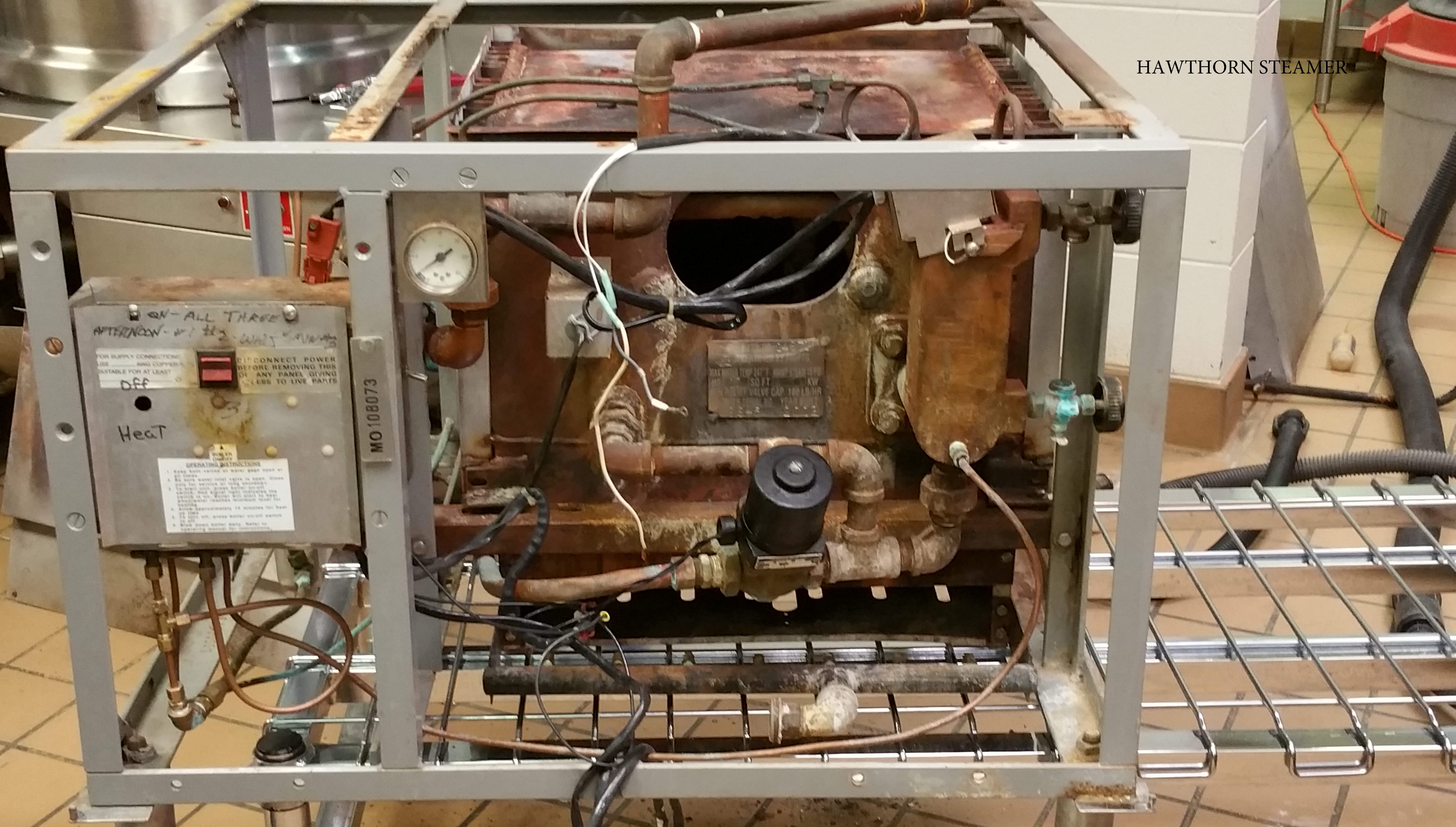


HIGH SCHOOL REWIRE





HIGH SCHOOL REWIRE



ON - ALL THREE  
AFTERNOON - #1 #2 - WAIT 5 MIN

FOR SUPPLY CONNECTIONS  
USE BRASS COPPER  
SUITABLE FOR AT LEAST  
OFF

DO NOT CONNECT POWER  
BEFORE REMOVING THIS  
OR ANY PANEL GIVING  
ACCESS TO LIVE PARTS

Heat

OPERATING INSTRUCTIONS  
1. Keep water level at least 1/2 inch above  
2. Do not water level valve in open. Close  
only for service or when changing  
3. In case of high water level, close  
valve to stop. Do not open valve for  
4. Allow approximately 15 minutes for heat  
5. Do not use glass water level switch  
6. Do not touch boiler parts when in  
operating condition for instructions.

MO 108073

MAXIMUM TEMP 212°F MAXIMUM PRESSURE  
150 PSI MAXIMUM CAPACITY 100 LB-HR  
YEAR 1911



HAWTHORN STEAMER



HAWTHORN STEAMER





HAWTHORN STEAMER

